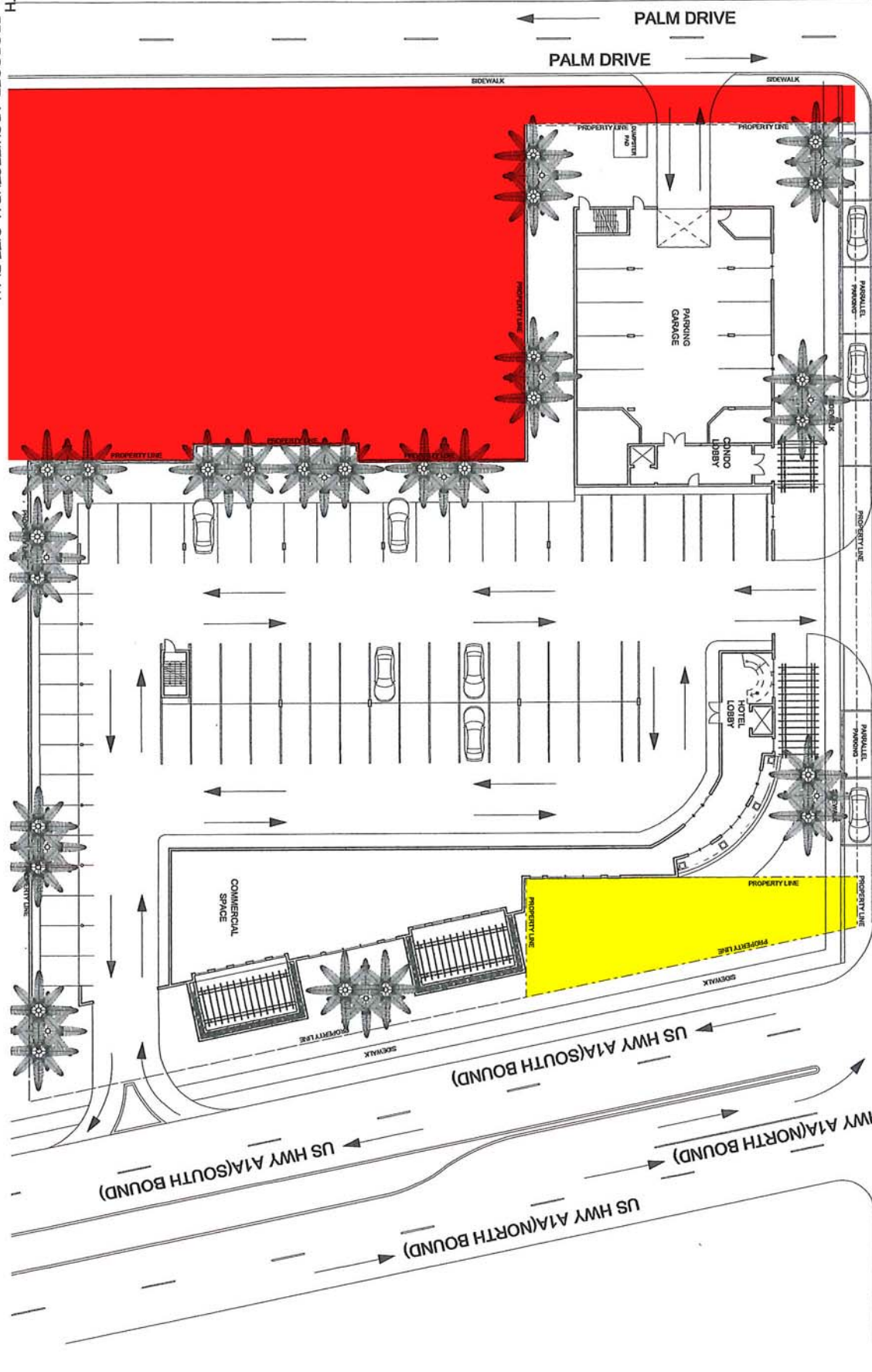




NORTH
 PROPOSED ARCHITECTURAL SITE PLAN
 SCALE: 1/16" = 1'-0"



DESOTO PARKWAY
 DESOTO PARKWAY

US HWY A1A(SOUTH BOUND)
 US HWY A1A(SOUTH BOUND)
 US HWY A1A(NORTH BOUND)
 US HWY A1A(NORTH BOUND)

SITE PLAN AND
 GENERAL INFORMATION
A1.0

ARCHITECTURAL
DESOTO PARKWAY
CONCEPTUAL DESIGN
 DESOTO PARKWAY AT A1A
 SATELLITE BEACH FL 32937



SPACECOAST ARCHITECTS, P.A.
 FL REG AA C1890
 333A FIFTH AVENUE
 INDIALANTIC, FL 32903
 PHONE (321)728-4422
 EMAIL kerry-spacearc@ctfrr.com



REVISIONS		
REV	DATE	REVISION